

# GC Orthodontics

GLOBAL EXPERTS IN ORTHODONTICS

## Table of Contents

---

Brackets	3
Buccal Tubes	41
Archwires and Accessories	55
Elastomerics	73
Miscellaneous	77

---

## GC Orthodontics America Inc.

11535 S. Central Avenue  
Alsip, IL. 60803  
Phone # 888-332-4883  
Fax # 708-897-8857  
[www.gcorthodontics.com](http://www.gcorthodontics.com)



Printed on 60 % recycled paper

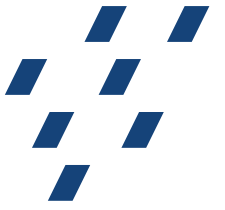
---

\*MBT is a trademark of 3M Unitek



**GC Orthodontics**  
GLOBAL EXPERTS IN ORTHODONTICS





Brackets



Global Experts in Orthodontics™

**GC Orthodontics**  
GLOBAL EXPERTS IN ORTHODONTICS

## Brackets Summary

---

EXPERIENCE Metal	7
EXPERIENCE Mini Metal	12
EXPERIENCE Ceramic	15
EXPERIENCE L	20
Chic	22
Legend Mini / Legend Medium	25
Legacy / Legacy Mini	36
Standard Edgewise	39

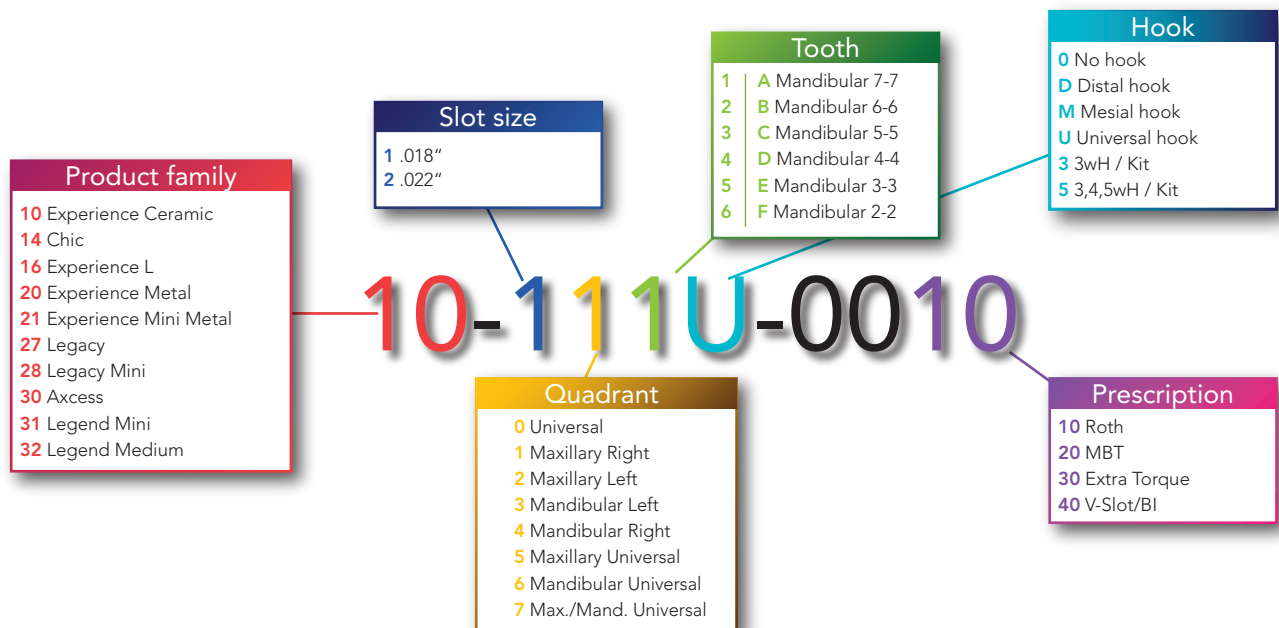


# A-Box



A-Box Is GC Orthodontics' stylish and organized storage box for the EXPERIENCE™ and Chic bracket lines.  
**P/N: 95-00A0-0000**

## How are P/Ns built?



# EXPERIENCE

The EXPERIENCE collection of self-ligating appliances each offer their own unique form of precision, aesthetics, and patient comfort without compromise to your orthodontic treatment plan. Wires are passive early in treatment, and actively engage as larger wire sizes are introduced towards finishing offering optimal control throughout. Numerous prescriptions are available for treatment versatility.



**EXPERIENCE Metal:** This classic self-ligating twin provides both low friction and control which are the most sought after parameters in orthodontic appliances today.

**EXPERIENCE Mini Metal:** Smaller version than the classic sized metal self-ligating; this bracket exhibits exceptional aesthetics with the same reliable performance.



**EXPERIENCE Ceramic:** This ceramic self-ligating twin delivers outstanding aesthetics and performance. The clip is rhodium coated and blends into the ceramic body of the bracket. EXPERIENCE ceramic is compatible with EXPERIENCE metal.

**EXPERIENCE L:** This low profile full lingual system offers exceptional patient comfort along with clinical effectiveness. Its gold colored clip provides easy citing for opening and closing procedures. Reliability and ease of use makes this the choice for lingual treatment.



**EXPERIENCE LSB:** This smaller based lingual bracket is the tool of choice for lingual treatment for more crowded spaces, or when indications are for a more direct approach to the minor tooth movements associated with the social six.

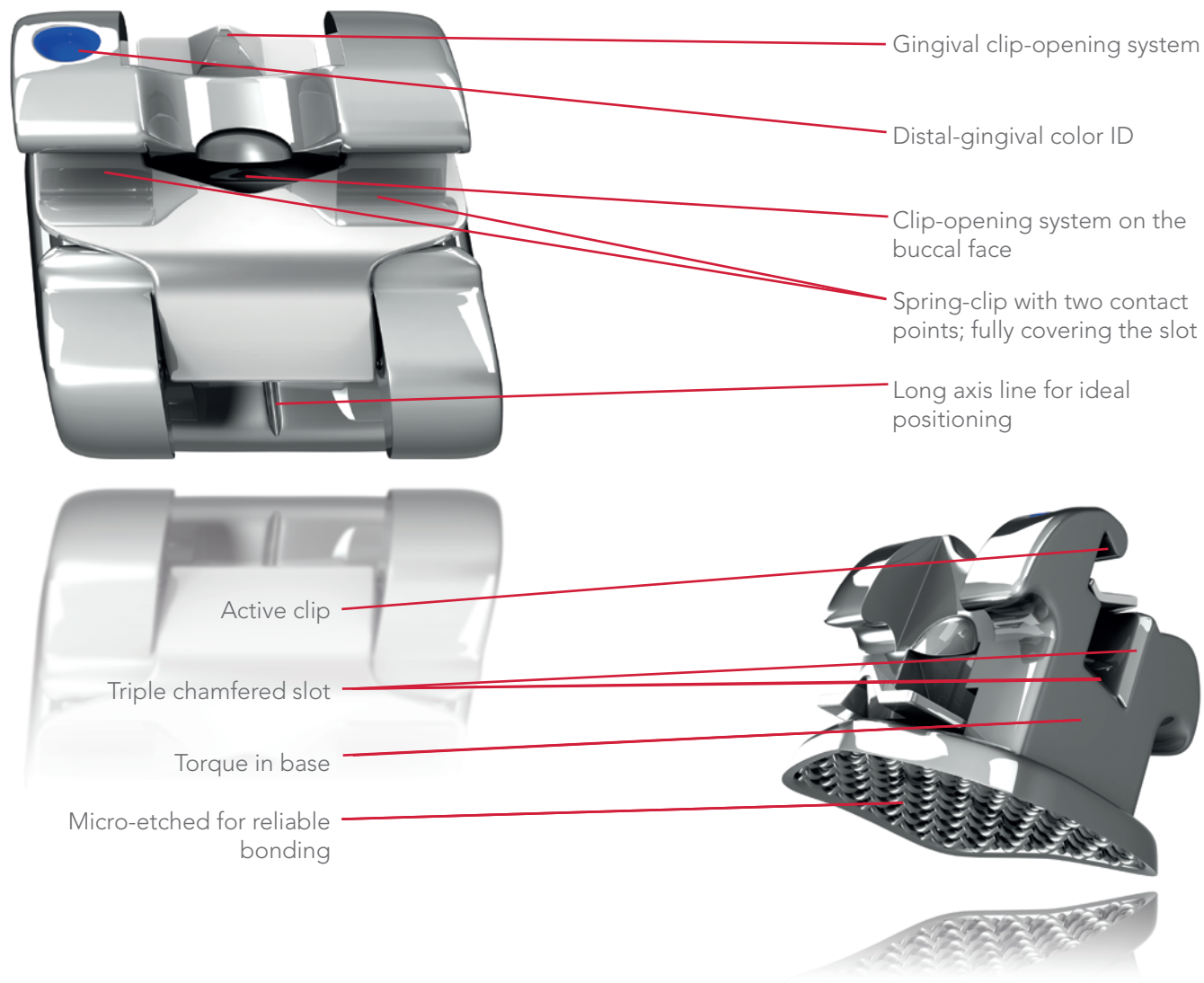
\*Roth/MBT prescriptions are not endorsed specifically by the named orthodontist.



# EXPERIENCE Metal

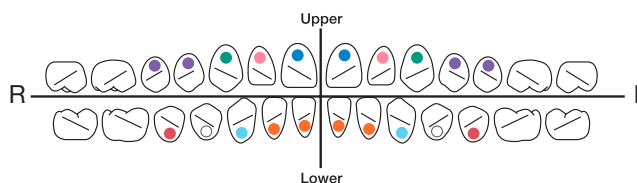
**SL** Product

A classic self-ligating bracket system proven reliable for the precision, control and versatility needed for your orthodontic treatment.



### Color codes

The distal-gingival color code allows identification of the bracket to prevent bonding errors. For some prescriptions, these color codes may be different on the bicuspid.



# EXPERIENCE

## EXPERIENCE Metal Roth\* Type

MAXILLARY					P/N			
Tooth	I/O mm	Torque (°)	Angulation (°)	Rotation (°)	.018"		.022"	
					R	L	R	L
U 1	.81	12°	5°	0°	20-1110-0010	20-1210-0010	20-2110-0010	20-2210-0010
U 2	1.07	8°	9°	0°	20-1120-0010	20-1220-0010	20-2120-0010	20-2220-0010
U 2/Hk	1.07	8°	9°	0°	20-112D-0010	20-122D-0010	20-212D-0010	20-222D-0010
U 3	.46	-2°	13°	4°m	20-1130-0010	20-1230-0010	20-2130-0010	20-2230-0010
U 3/Hk	.46	-2°	13°	4°m	20-113D-0010	20-123D-0010	20-213D-0010	20-223D-0010
U 4-5	.46	-7°	0°	2°d	20-1140-0010	20-1240-0010	20-2140-0010	20-2240-0010
U 4-5/Hk d.	.46	-7°	0°	2°d	20-114D-0010	20-124D-0010	20-214D-0010	20-224D-0010
U 4-5/Hk m.	.46	-7°	0°	2°d	20-114M-0010	20-124M-0010	20-214M-0010	20-224M-0010

MANDIBULAR					P/N			
Tooth	I/O mm	Torque (°)	Angulation (°)	Rotation (°)	.018"		.022"	
					R	L	R	L
L 1-2	1.17	0°	2°	0°	20-1410-0010	20-1310-0010	20-2410-0010	20-2310-0010
L 2/Hk	1.17	0°	2°	0°	20-141D-0010	20-131D-0010	20-241D-0010	20-231D-0010
L 3	.56	-11°	7°	2°m	20-1430-0010	20-1330-0010	20-2430-0010	20-2330-0010
L 3/Hk	.56	-11°	7°	2°m	20-143D-0010	20-133D-0010	20-243D-0010	20-233D-0010
L 4	.38	-17°	0°	4°d	20-1440-0010	20-1340-0010	20-2440-0010	20-2340-0010
L 4/Hk	.38	-17°	0°	4°d	20-144D-0010	20-134D-0010	20-244D-0010	20-234D-0010
L 5	.28	-22°	0°	4°d	20-1450-0010	20-1350-0010	20-2450-0010	20-2350-0010
L 5/Hk	.28	-22°	0°	4°d	20-145D-0010	20-135D-0010	20-245D-0010	20-235D-0010





## EXPERIENCE Metal Extra Torque

This prescription is based upon the use of undersized archwires. It has a higher torque on the maxillary incisors. In addition it has higher buccal root-torque on upper bicuspids which prevents interference with lingual cuspids.

MAXILLARY					P/N			
Tooth	I/O mm	Torque (°)	Angulation (°)	Rotation (°)	.018"		.022"	
					R	L	R	L
U 1	.81	18°	5°	0°	20-1110-0030	20-1210-0030	20-2110-0030	20-2210-0030
U 2	1.07	10°	8°	0°	20-1120-0030	20-1220-0030	20-2120-0030	20-2220-0030
U 2/Hk	1.07	10°	8°	0°	20-112D-0030	20-122D-0030	20-212D-0030	20-222D-0030
U 3	.46	0°	8°	2°m	20-1130-0030	20-1230-0030	20-2130-0030	20-2230-0030
U 3/Hk	.46	0°	8°	2°m	20-113D-0030	20-123D-0030	20-213D-0030	20-223D-0030
U 4-5	.46	-10°	4°	2°d	20-1140-0030	20-1240-0030	20-2140-0030	20-2240-0030
U 4-5/Hk	.46	-10°	4°	2°d	20-114M-0030	20-124M-0030	20-214M-0030	20-224M-0030

MANDIBULAR					P/N			
Tooth	I/O mm	Torque (°)	Angulation (°)	Rotation (°)	.018"		.022"	
					R	L	R	L
L 1-2	1.17	1°	0°	0°	20-1610-0030	20-1610-0030	20-2610-0030	20-2610-0030
L 3	.56	-3°	7°	2°m	20-1430-0030	20-1330-0030	20-2430-0030	20-2330-0030
L 3/Hk	.56	-3°	7°	2°m	20-143D-0030	20-133D-0030	20-243D-0030	20-233D-0030
L 4/5	.33	-7°	0°	2°d	20-1440-0030	20-1340-0030	20-2440-0030	20-2340-0030
L 4/5/Hk	.33	-7°	0°	2°d	20-144D-0030	20-134D-0030	20-244D-0030	20-234D-0030

# EXPERIENCE

## EXPERIENCE Metal MBT\*

MAXILLARY					P/N			
Tooth	I/O mm	Torque (°)	Angulation (°)	Rotation (°)	.018"		.022"	
					R	L	R	L
U 1	.81	17°	4°	0°	20-1110-0020	20-1210-0020	20-2110-0020	20-2210-0020
U 2	1.07	10°	8°	0°	20-1120-0020	20-1220-0020	20-2120-0020	20-2220-0020
U 3	.46	-7°	8°	0°	20-1130-0020	20-1230-0020	20-2130-0020	20-2230-0020
U 3/Hk	.46	-7°	8°	0°	20-113D-0020	20-123D-0020	20-213D-0020	20-223D-0020
U 3/Hk	.46	0°	8°	0°	20-113D-0021	20-123D-0021	20-213D-0021	20-223D-0021
U 4	.46	-7°	0°	0°	20-1540-0020	20-1540-0020	20-2540-0020	20-2540-0020
U 4/Hk	.46	-7°	0°	0°	20-114D-0020	20-124D-0020	20-214D-0020	20-224D-0020
U 5	.46	-7°	0°	0°	20-1550-0020	20-1550-0020	20-2550-0020	20-2550-0020
U 5/Hk	.46	-7°	0°	0°	20-115D00-20	20-125D00-20	20-215D00-20	20-225D00-20

MANDIBULAR					P/N			
Tooth	I/O mm	Torque (°)	Angulation (°)	Rotation (°)	.018"		.022"	
					R	L	R	L
L 1-2	1.17	-6°	0°	0°	20-1610-0020	20-1610-0020	20-2610-0020	20-2610-0020
L 3	.56	-6°	3°	0°	20-1430-0020	20-1330-0020	20-2430-0020	20-2330-0020
L 3/Hk	.56	-6°	3°	0°	20-143D-0020	20-133D-0020	20-243D-0020	20-233D-0020
L 3/Hk	.56	0°	3°	0°	20-143D-0021	20-133D-0021	20-243D-0021	20-233D-0021
L 4	.33	-12°	2°	0°	20-1440-0020	20-1340-0020	20-2440-0020	20-2340-0020
L 4/Hk	.33	-12°	2°	0°	20-144D-0020	20-134D-0020	20-244D-0020	20-234D-0020
L 5	.33	-17°	2°	0°	20-1450-0020	20-1350-0020	20-2450-0020	20-2350-0020
L 5/Hk	.33	-17°	2°	0°	20-145D-0020	20-135D-0020	20-245D-0020	20-235D-0020



## Kits EXPERIENCE Metal

Prescription	Upper arch	Lower arch	Hook on	P/N	
				.018"	.022"
Roth Type	5-5	5-5	—	20-1CC0-0010	20-2CC0-0010
Roth Type	5-5	5-5	3	20-1CC3-0010	20-2CC3-0010
Roth Type	5-5	5-5	3,4,5	20-1CC5-0010	20-2CC5-0010

Prescription	Upper arch	Lower arch	Hook on	P/N	
				.018"	.022"
Extra Torque	5-5	5-5	—	20-1CC0-0030	20-2CC0-0030
Extra Torque	5-5	5-5	3	20-1CC3-0030	20-2CC3-0030
Extra Torque	5-5	5-5	3,4,5	20-1CC5-0030	20-2CC5-0030

Prescription	Upper arch	Lower arch	Hook on	P/N	
				.018"	.022"
MBT*	5-5	5-5	—	20-1CC0-0020	20-2CC0-0020
MBT*	5-5	5-5	3	20-1CC3-0020	20-2CC3-0020
MBT*	5-5	5-5	3,4,5	20-1CC5-0020	20-2CC5-0020

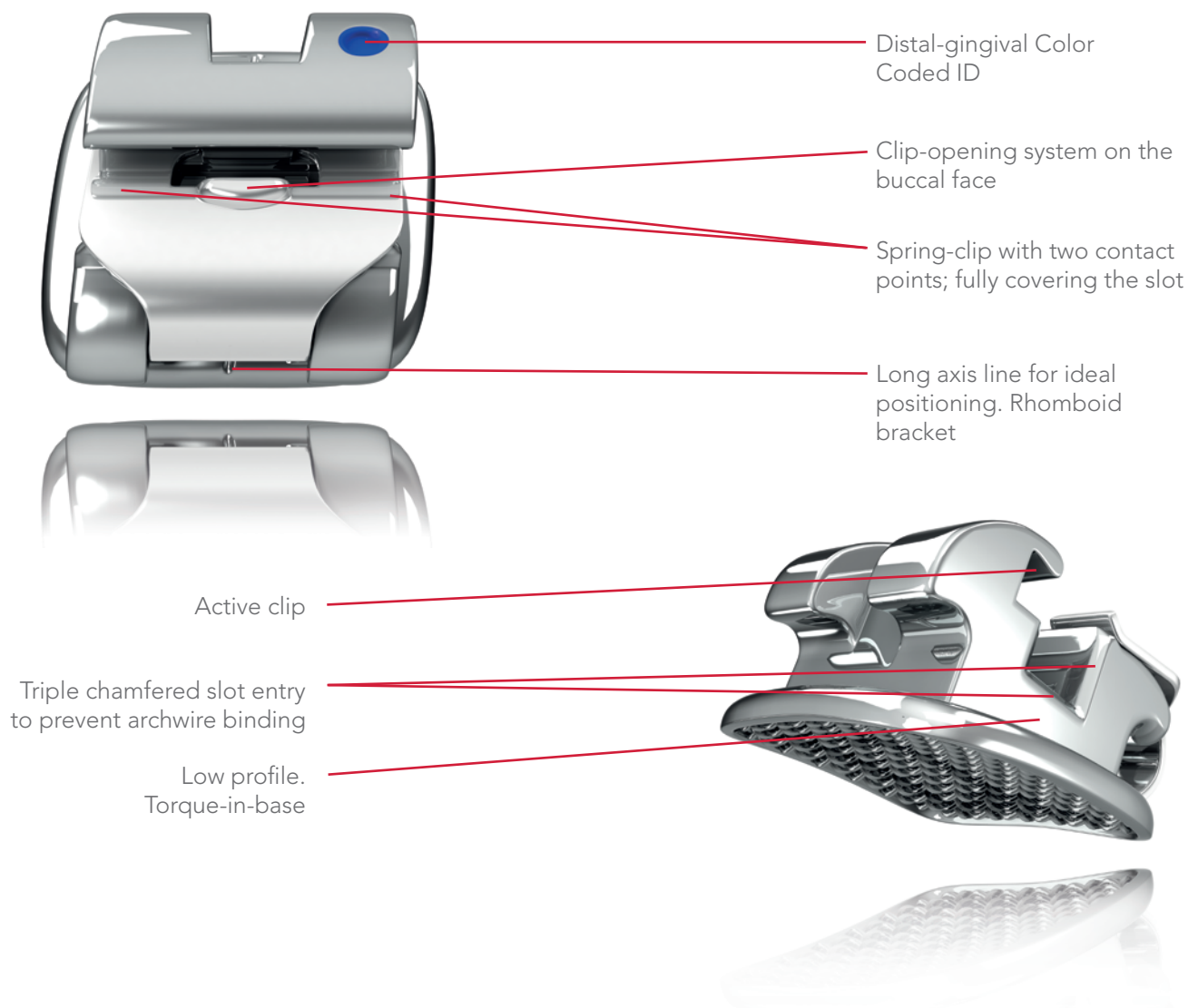
# EXPERIENCE

## EXPERIENCE Mini Metal

SL Product

Experience Mini metal self-ligating brackets are a new option for aesthetics and performance in metal self-ligation. The smaller version of the EXPERIENCE metal achieves patient satisfaction and the high standards orthodontists demand.

- Lower profile - Reduced size
- Easy to open, strong reliable clip
- Full three dimensional control.





## EXPERIENCE Mini Metal Roth\* Type

MAXILLARY				P/N			
Tooth	Torque (°)	Angulation (°)	Rotation (°)	.018"		.022"	
				R	L	R	L
U 1	12°	5°	0°	21-1110-0010	21-1210-0010	21-2110-0010	21-2210-0010
U 2	8°	9°	0°	21-1120-0010	21-1220-0010	21-2120-0010	21-2220-0010
U 3/Hk	-2°	13°	4°m	21-113D-0010	21-123D-0010	21-213D-0010	21-223D-0010
U 4-5	-7°	0°	2°d	21-1140-0010	21-1240-0010	21-2140-0010	21-2240-0010
U 4-5/Hk distal	-7°	0°	2°d	21-114D-0010	21-124D-0010	21-214D-0010	21-224D-0010

MANDIBULAR				P/N			
Tooth	Torque (°)	Angulation (°)	Rotation (°)	.018"		.022"	
				R	L	R	L
L 1-2	-1°	2°	0°	21-1410-0010	21-1310-0010	21-2410-0010	21-2310-0010
L 3/Hk	-11°	7°	2°m	21-143D-0010	21-133D-0010	21-243D-0010	21-233D-0010
L 4	-17°	-1°	4°d	21-1440-0010	21-1340-0010	21-2440-0010	21-2340-0010
L 4/Hk	-17°	-1°	4°d	21-144D-0010	21-134D-0010	21-244D-0010	21-234D-0010
L 5	-22°	-1°	4°d	21-1450-0010	21-1350-0010	21-2450-0010	21-2350-0010
L 5/Hk	-22°	-1°	4°d	21-145D-0010	21-135D-0010	21-245D-0010	21-235D-0010

## Kits EXPERIENCE Mini Metal

Prescription	Upper arch	Lower arch	Hook on	P/N	
				.018"	.022"
Roth Type/Interactive	5-5	5-5	3	21-1CC3-0010	21-2CC3-0010
Roth Type/Interactive	5-5	5-5	3,4,5	21-1CC5-0010	21-2CC5-0010
MBT*/Interactive	5-5	5-5	3	—	21-2CC3-0020
MBT*/Interactive	5-5	5-5	3,4,5	—	21-2CC5-0020



## EXPERIENCE Mini Metal MBT\*

MAXILLARY			P/N .022"	
Tooth	Torque (°)	Angulation (°)	Interactive	
			R	L
U 1	17°	4°	21-2110-0020	21-2210-0020
U 2	10°	8°	21-2120-0020	21-2220-0020
U 3/Hk	-7°	8°	21-213D-0020	21-223D-0020
U 4	-7°	0°	21-2540-0020	21-2540-0020
U 4/Hk	-7°	0°	21-214D-0020	21-224D-0020
U 5	-7°	0°	21-2550-0020	21-2550-0020
U 5/Hk	-7°	0°	21-215D-0020	21-225D-0020

MANDIBULAR			P/N .022"	
Tooth	Torque (°)	Angulation (°)	Interactive	
			R	L
L 1-2	-6°	0°	21-2610-0020	21-2610-0020
L 3/Hk	-6°	3°	21-243D-0020	21-233D-0020
L 4	-12°	2°	21-2440-0020	21-2340-0020
L 4/Hk	-12°	2°	21-244D-0020	21-234D-0020
L 5	-17°	2°	21-2450-0020	21-2350-0020
L 5/Hk	-17°	2°	21-245D-0020	21-235D-0020

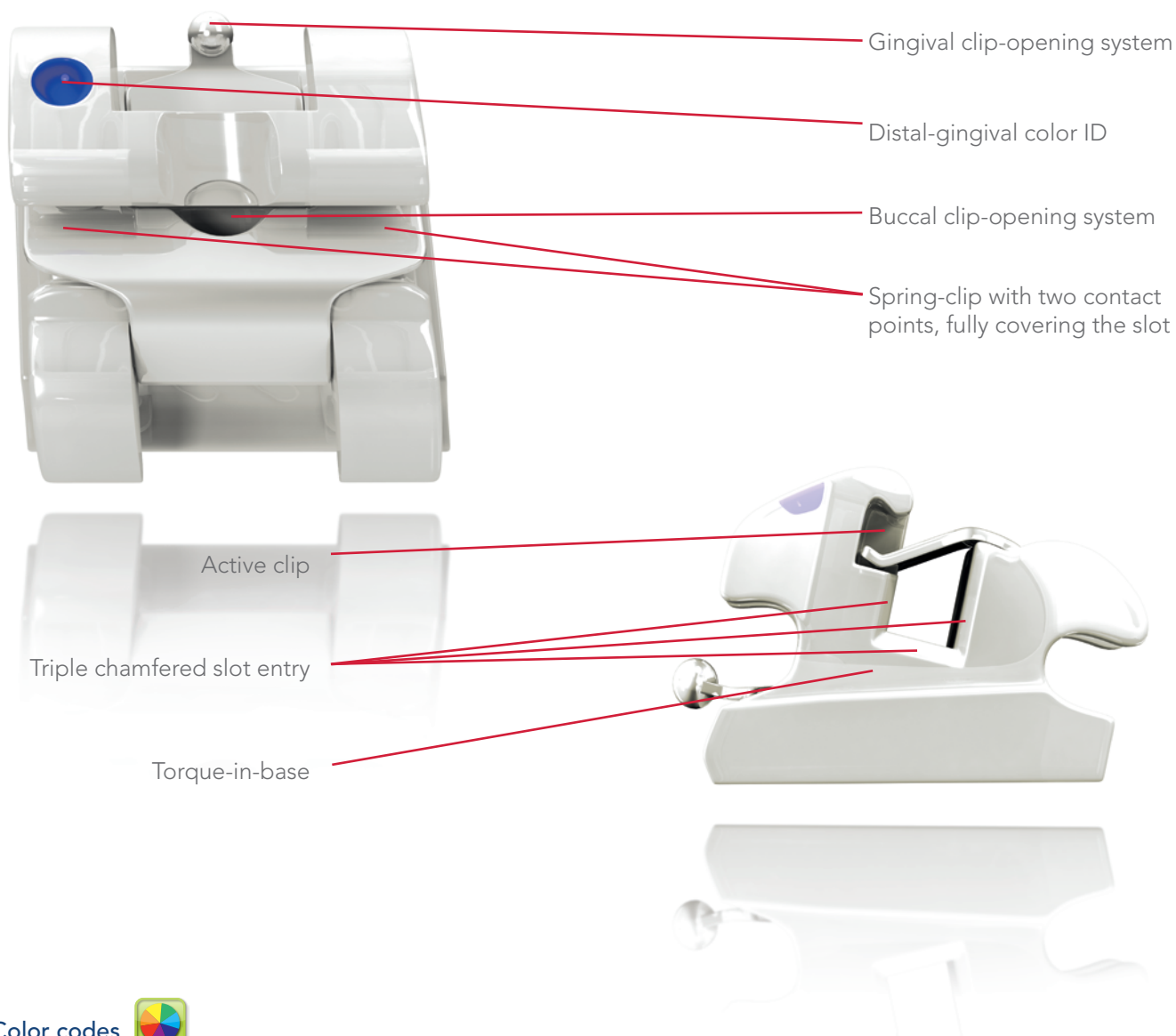


# EXPERIENCE Ceramic

**Hi** Aesthetic

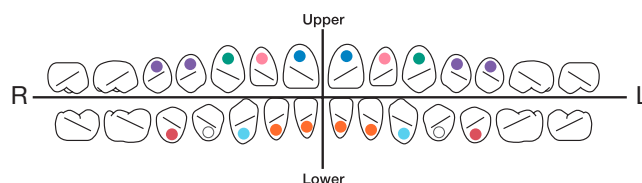
**SL** Product

This exquisite ceramic bracket adapts to the patient's natural tooth color and has all the treatment versatility, strength and bonding reliability you require of a ceramic appliance.



## Color codes

The distal-gingival color code allows identification of the bracket to prevent bonding errors. For some prescriptions, these color codes may be different on the bicuspid.



# EXPERIENCE

## EXPERIENCE Ceramic Roth\* Type

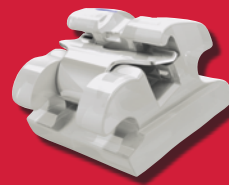
MAXILLARY					P/N			
Tooth	I/O mm	Torque (°)	Angulation (°)	Rotation (°)	.018"		.022"	
					R	L	R	L
U 1	.81	12°	5°	0°	10-1110-0010	10-1210-0010	10-2110-0010	10-2210-0010
U 2	1.07	8°	9°	0°	10-1120-0010	10-1220-0010	10-2120-0010	10-2220-0010
U 3	.46	-2°	13°	4°m	10-1130-0010	10-1230-0010	10-2130-0010	10-2230-0010
U 3/Hk	.46	-2°	13°	4°m	10-113U-0010	10-123U-0010	10-213U-0010	10-223U-0010
U 4-5	.46	-7°	0°	2°d	10-1140-0010	10-1240-0010	10-2140-0010	10-2240-0010
U 4-5/Hk	.46	-7°	0°	2°d	10-114U-0010	10-124U-0010	10-214U-0010	10-224U-0010

MANDIBULAR					P/N			
Tooth	I/O mm	Torque (°)	Angulation (°)	Rotation (°)	.018"		.022"	
					R	L	R	L
L 1-2	1.17	0°	2°	0°	10-1410-0010	10-1310-0010	10-2410-0010	10-2310-0010
L 3	.56	-11°	7°	2°m	10-1430-0010	10-1330-0010	10-2430-0010	10-2330-0010
L 3/Hk	.56	-11°	7°	2°m	10-143U-0010	10-133U-0010	10-243U-0010	10-233U-0010

\*The ceramic material being much harder than enamel, we recommend using EXPERIENCE Metal brackets on mandibular bicuspid (L4, L5).







## EXPERIENCE Ceramic Extra Torque

This prescription is based upon the use of undersized archwires with a higher torque on the maxillary incisors. Higher buccal root-torque on the upper bicuspids prevents any interference with lingual cusps.

MAXILLARY					P/N			
Tooth	I/O mm	Torque (°)	Angulation (°)	Rotation (°)	.018"		.022"	
					R	L	R	L
U 1	.81	18°	5°	0°	10-1110-0030	10-1210-0030	10-2110-0030	10-2210-0030
U 2	1.07	10°	8°	0°	10-1120-0030	10-1220-0030	10-2120-0030	10-2220-0030
U 3	.46	0°	8°	2°m	10-1130-0030	10-1230-0030	10-2130-0030	10-2230-0030
U 3/Hk	.46	0°	8°	2°m	10-113U-0030	10-123U-0030	10-213U-0030	10-223U-0030
U 4-5	.46	-10°	4°	2°d	10-1140-0030	10-1240-0030	10-2140-0030	10-2240-0030
U 4-5/Hk	.46	-10°	4°	2°d	10-114U-0030	10-124U-0030	10-214U-0030	10-224U-0030

MANDIBULAR					P/N			
Tooth	I/O mm	Torque (°)	Angulation (°)	Rotation (°)	.018"		.022"	
					R	L	R	L
L 1-2	1.17	1°	0°	0°	10-1610-0030	10-1610-0030	10-2610-0030	10-2610-0030
L 3	.56	-3°	7°	2°m	10-1430-0030	10-1330-0030	10-2430-0030	10-2330-0030
L 3/Hk	.56	-3°	7°	2°m	10-143U-0030	10-133U-0030	10-243U-0030	10-233U-0030

\*The ceramic material being much harder than enamel, we recommend using EXPERIENCE Metal brackets on mandibular bicuspids (L4, L5).

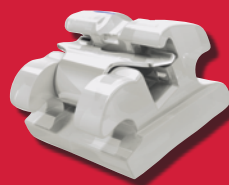
# EXPERIENCE

## EXPERIENCE Ceramic MBT\*

MAXILLARY					P/N			
Tooth	I/O mm	Torque (°)	Angulation (°)	Rotation (°)	.018"		.022"	
					R	L	R	L
U 1	.81	17°	4°	0°	10-1110-0020	10-1210-0020	10-2110-0020	10-2210-0020
U 2	1.07	10°	8°	0°	10-1120-0020	10-1220-0020	10-2120-0020	10-2220-0020
U 3/Hk	.46	-7°	8°	0°	10-113U-0020	10-123U-0020	10-213U-0020	10-223U-0020
U 3/Hk	.46	0°	8°	0°	10-113U-0021	10-123U-0021	10-213U-0021	10-223U-0021
U 4	.46	-7°	0°	0°	10-1540-0020	10-1540-0020	10-2540-0020	10-2540-0020
U 4/Hk	.46	-7°	0°	0°	10-154U-0020	10-154U-0020	10-254U-0020	10-254U-0020
U 5	.46	-7°	0°	0°	10-1550-0020	10-1550-0020	10-2550-0020	10-2550-0020
U 5/Hk	.46	-7°	0°	0°	10-155U-0020	10-155U-0020	10-255U-0020	10-255U-0020

MANDIBULAR					P/N			
Tooth	I/O mm	Torque (°)	Angulation (°)	Rotation (°)	.018"		.022"	
					R	L	R	L
L 1-2	1.17	-6°	0°	0°	10-1610-0020	10-1610-0020	10-2610-0020	10-2610-0020
L 3/Hk	.56	-6°	3°	0°	10-143U-0020	10-133U-0020	10-243U-0020	10-233U-0020
L 3/Hk	.56	0°	3°	0°	10-143U-0021	10-133U-0021	10-243U-0021	10-233U-0021

\*The ceramic material being much harder than enamel, we recommend using EXPERIENCE Metal brackets on mandibular bicuspid (L4, L5).



## Kits EXPERIENCE Ceramic

Prescription	Upper arch	Lower arch	Hook on	P/N	
				.018"	.022"
MBT*	3-3	—	3	10-1E03-0020	10-2E03-0020
MBT*	3-3	3-3	3	10-1EE3-0020	10-2EE3-0020
MBT*	5-5	—	3	10-1C03-0020	10-2C03-0020
MBT*	5-5	—	3,4,5	10-1C05-0020	10-2C05-0020
MBT*	5-5	3-3	3	10-1CE3-0020	10-2CE3-0020
MBT*	5-5	3-3	3,4,5	10-1CE5-0020	10-2CE5-0020

Prescription	Upper arch	Lower arch	Hook on	P/N	
				.018"	.022"
Roth Type	3-3	—	—	10-1E00-0010	10-2E00-0010
Roth Type	3-3	—	3	10-1E03-0010	10-2E03-0010
Roth Type	3-3	3-3	—	10-1EE0-0010	10-2EE0-0010
Roth Type	3-3	3-3	3	10-1EE3-0010	10-2EE3-0010
Roth Type	5-5	—	—	10-1C00-0010	10-2C00-0010
Roth Type	5-5	—	3	10-1C03-0010	10-2C03-0010
Roth Type	5-5	—	3,4,5	10-1C05-0010	10-2C05-0010
Roth Type	5-5	3-3	—	10-1CE0-0010	10-2CE0-0010
Roth Type	5-5	3-3	3	10-1CE3-0010	10-2CE3-0010
Roth Type	5-5	3-3	3,4,5	10-1CE5-0010	10-2CE5-0010

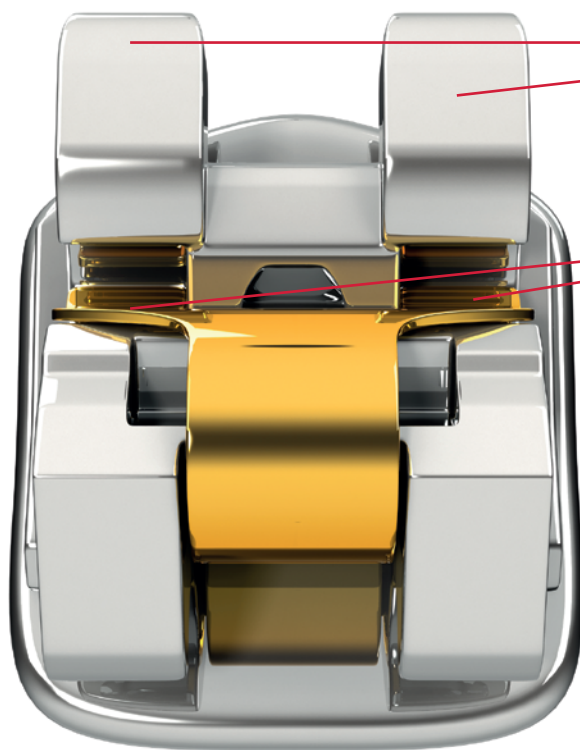
Prescription	Upper arch	Lower arch	Hook on	P/N	
				.018"	.022"
Extra Torque	3-3	—	3	10-1E03-0030	10-2E03-0030
Extra Torque	3-3	3-3	3	10-1EE3-0030	10-2EE3-0030
Extra Torque	5-5	—	3	10-1C03-0030	10-2C03-0030
Extra Torque	5-5	—	3,4,5	10-1C05-0030	10-2C05-0030
Extra Torque	5-5	3-3	3	10-1CE3-0030	10-2CE3-0030
Extra Torque	5-5	3-3	3,4,5	10-1CE5-0030	10-2CE5-0030

# EXPERIENCE

## EXPERIENCE L

SL Product

EXPERIENCE L is a lingual bracket that combines the efficiency of self-ligation, the patient comfort of a low profile design, and the user friendliness of a gold toned clip. EXPERIENCE LSB is a smaller based option for either more crowded or minor tooth movement cases.

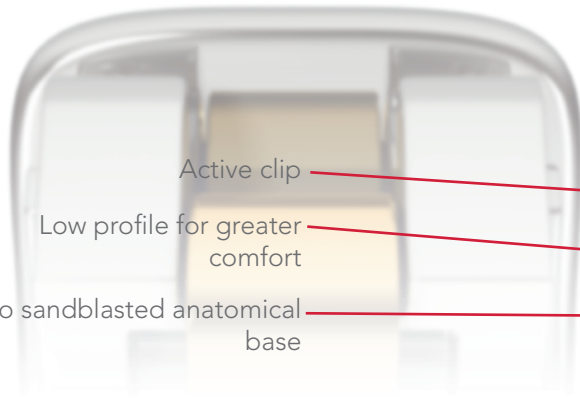


Rounded and polished tie wings to prevent occlusal interferences

Golden spring-clip for better visibility. Two contact points. Full slot coverage



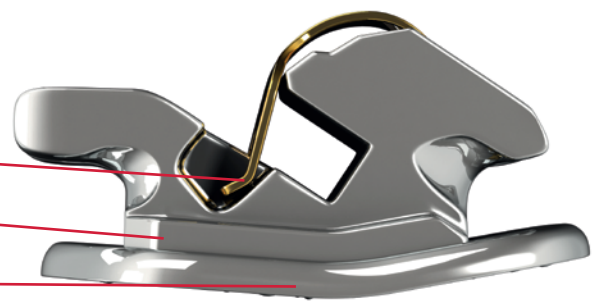
Cuspid bracket with hook



Active clip

Low profile for greater comfort

Micro sandblasted anatomical base





# EXPERIENCE L

MAXILLARY				P/N	
Tooth	Torque (°)	Angulation (°)	Rotation (°)	.018"	
				R	L
U 1-2	60°	0°	0°	16-1510-0010	16-1510-0010
U 3	60°	0°	0°	16-1530-0010	16-1530-0010
U 3/Hk	60°	0°	0°	16-153U-0010	16-153U-0010
U 4-5	10°	0°	0°	16-1740-0010	16-1740-0010
U 4-5/Hk	10°	0°	0°	16-174U-0010	16-174U-0010
U 6-7/Hk	10°	0°	0°	16-116M-0010	16-126M-0010

MANDIBULAR				P/N	
Tooth	Torque (°)	Angulation (°)	Rotation (°)	.018"	
				R	L
L 1-2	50°	0°	0°	16-1610-0010	16-1610-0010
L 3	50°	0°	0°	16-1630-0010	16-1630-0010
L 3/Hk	50°	0°	0°	16-163U-0010	16-163U-0010
L 4-5	10°	0°	0°	16-1740-0010	16-1740-0010
L 4-5/Hk	10°	0°	0°	16-174U-0010	16-174U-0010
L 6-7/Hk	0°	0°	0°	16-146M-0010	16-136M-0010

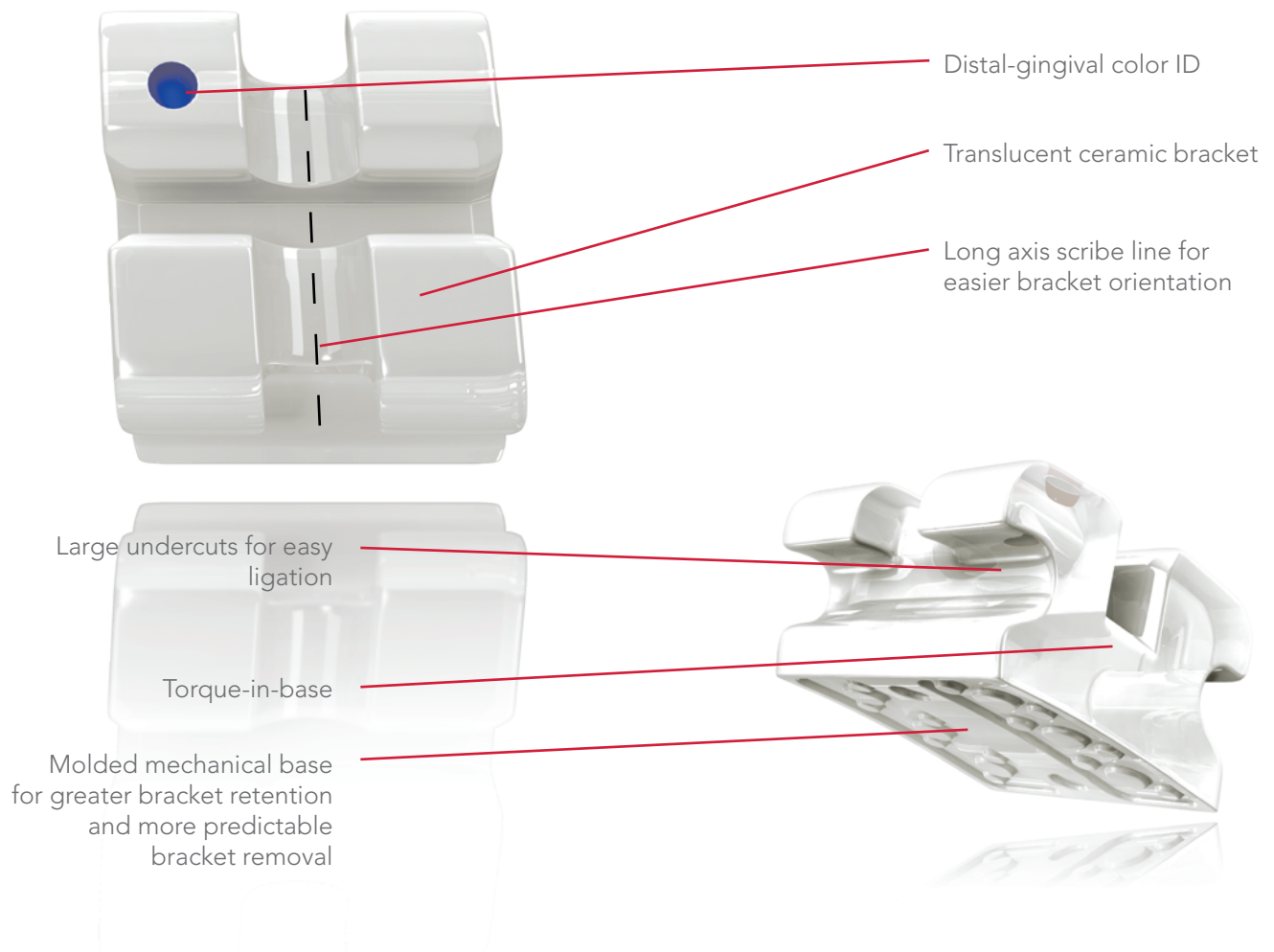
EXPERIENCE L Kits		P/N
		.018"
U 7-7		16-1A00-0010
U/L 7-7		16-1AA0-0010

# Chic

Chic

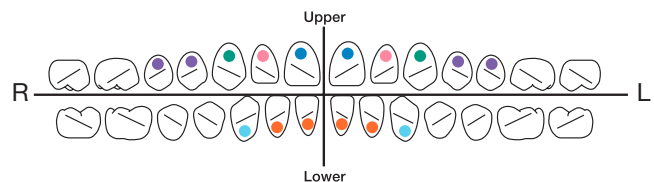
 Aesthetic

Chic is an injection molded ceramic bracket providing uniformity, strength, and a true mechanical base. Its translucency compliments the patient's tooth shade and makes for a highly aesthetic solution.

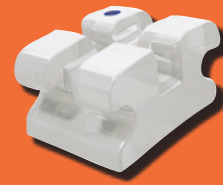


## Color codes

The distal-gingival color code allows identification of the bracket to prevent bonding errors.



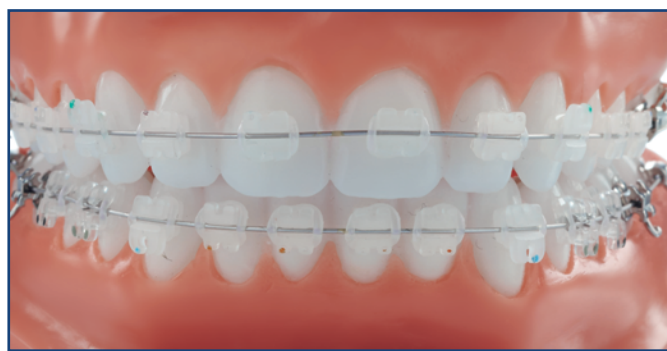
\*Roth/MBT prescriptions are not endorsed specifically by the named orthodontist.



## Chic Roth Type

MAXILLARY			P/N			
Tooth	Torque (°)	Angulation (°)	.018"		.022"	
			R	L	R	L
U 1	12°	5°	14-1110-0010	14-1210-0010	14-2110-0010	14-2210-0010
U 2	8°	9°	14-1120-0010	14-1220-0010	14-2120-0010	14-2220-0010
U 3/Hk	-2°	13°	14-113D-0010	14-123D-0010	14-213D-0010	14-223D-0010
U 4-5	-7°	0°	14-1540-0010	14-1540-0010	14-2540-0010	14-2540-0010

MANDIBULAR			P/N			
Tooth	Torque (°)	Angulation (°)	.018"		.022"	
			R	L	R	L
L 1-2	0°	0°	14-1610-0010	14-1610-0010	14-2610-0010	14-2610-0010
L 3/Hk	-11	7°	14-143D-0010	14-133D-0010	14-243D-0010	14-233D-0010



# Chic

## Chic MBT\*

MAXILLARY			P/N	
Tooth	Torque (°)	Angulation (°)	.022"	
			R	L
U 1	17°	4°	14-2110-0020	14-2210-0020
U 2	10°	8°	14-2120-0020	14-2220-0020
U 3/Hk	-7°	8°	14-213U-0020	14-223U-0020
U 4	-7°	0°	14-2540-0020	14-2540-0020
U 5	-7°	0°	14-2550-0020	14-2550-0020

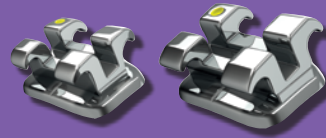
MANDIBULAR			P/N	
Tooth	Torque (°)	Angulation (°)	.022"	
			R	L
L 1-2	-6°	0°	14-2610-0020	14-2610-0020
L 3/Hk	-6°	3°	14-243U-0020	14-233U-0020

## Kits Chic

Prescription	Upper arch	Lower arch	Hook on	P/N	
				.018"	.022"
Roth Type	5-5	3-3	3	14-1CE3-0010	14-2CE3-0010
MBT Type	5-5	3-3	3	—	14-2CE3-0020

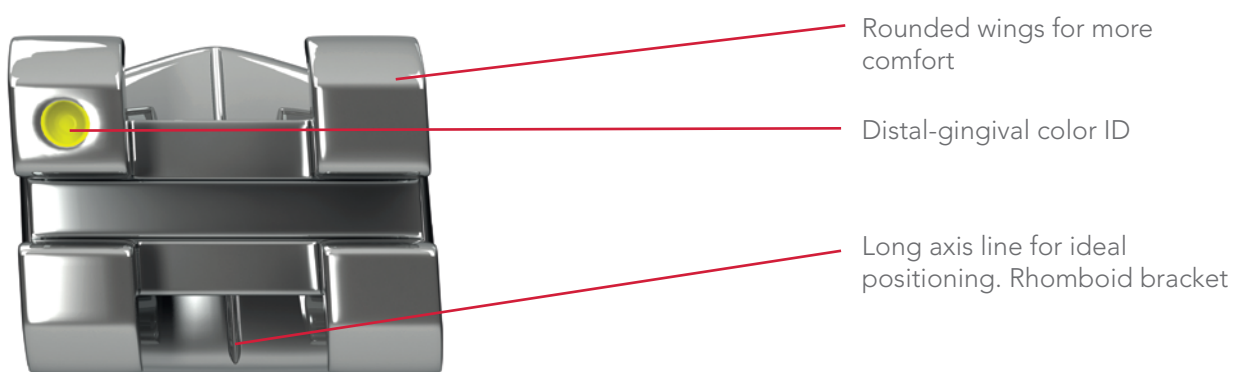


# LEGEND



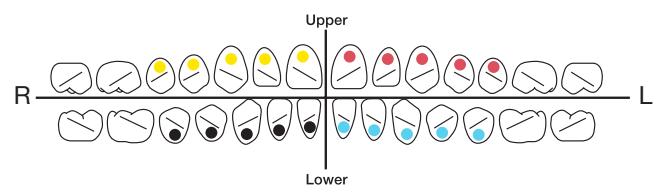
## LEGEND Mini / LEGEND Medium

The Legend bracket is a traditional twin design, yet is manufactured with a level of precision that sets it apart from other twin metal appliances. Legend comes in both standard and mini sizes, as well as with features that aid in both placement and wire engagement.



### Color codes

The distal-gingival color code allows identification of the bracket to prevent bonding errors. For some prescriptions, these color codes may be different on the bicuspids.



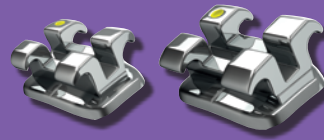
# LEGEND

## LEGEND Mini Roth\* Type

MAXILLARY					P/N			
Tooth	I/O mm	Torque (°)	Angulation (°)	Rotation (°)	.018"		.022"	
					R	L	R	L
U 1	.25	12°	5°	0°	31-1110-0010	31-1210-0010	31-2110-0010	31-2210-0010
U 2	.78	8°	9°	0°	31-1120-0010	31-1220-0010	31-2120-0010	31-2220-0010
U 2/Hk	.78	8°	9°	0°	31-112D-0010	31-122D-0010	31-212D-0010	31-222D-0010
U 3/Hk	.25	2°	10°	4 °m	31-113D-0010	31-123D-0010	31-213D-0010	31-223D-0010
U 4	.37	-7°	0°	2°d	31-1140-0010	31-1240-0010	31-2140-0010	31-2240-0010
U 4/Hk	.37	-7°	0°	2°d	31-114M-0010	31-124M-0010	31-214M-0010	31-224M-0010
U 4/Hk, Off. Base	.37	-7°	0°	0°	—	—	31-214M-0013	31-224M-0013
U 4-5/Off. Base	.37	-7°	0°	0°	31-1540-0013	31-1540-0013	31-2540-0013	31-2540-0013
U 5	.48	-7°	0°	2°d	31-1150-0010	31-1250-0010	31-2150-0010	31-2250-0010
U 5/Hk	.48	-7°	0°	2°d	31-115M-0010	31-125M-0010	—	—

MANDIBULAR					P/N			
Tooth	I/O mm	Torque (°)	Angulation (°)	Rotation (°)	.018"		.022"	
					R	L	R	L
L 1-2	.97	-1°	0°	0°	31-1610-0010	31-1610-0010	31-2610-0010	31-2610-0010
L 3	.25	-11°	7°	2°m	31-1430-0010	31-1330-0010	31-2430-0010	31-2330-0010
L 3/Hk	.25	-11°	7°	2°m	31-143D-0010	31-133D-0010	31-243D-0010	31-233D-0010
L 4	.28	-17°	0°	4°d	31-1440-0010	31-1340-0010	31-2440-0010	31-2340-0010
L 4/Off. Base	.28	-17°	0°	0°	31-1640-0013	31-1640-0013	31-2640-0013	31-2640-0013
L 4/Hk	.28	-17°	0°	4°d	31-144D-0010	31-134D-0010	31-244D-0010	31-234D-0010
L 4/Hk, Off. Base	.28	-17°	0°	0°	31-144D-0013	31-134D-0013	31-244D-0013	31-234D-0013
L 5	.33	-22°	0°	4°d	31-1450-0010	31-1350-0010	31-2450-0010	31-2350-0010
L 5/Off. Base	.33	-22°	0°	0°	31-1650-0013	31-1650-0013	31-2650-0013	31-2650-0013
L 5/Hk	.33	-22°	0°	4°d	31-145D-0010	31-135D-0010	31-245D-0010	31-235D-0010
L 5/Hk, Off. Base	.33	-22°	0°	0°	31-145D-0013	31-135D-0013	31-245D-0013	31-235D-0013

\*Roth/MBT prescriptions are not endorsed specifically by the named orthodontists.



## LEGEND Mini MBT\*

MAXILLARY				P/N			
Tooth	I/O mm	Torque (°)	Angulation (°)	.018"		.022"	
				R	L	R	L
U 1	.25	17°	4°	31-1110-0020	31-1110-0020	31-2110-0020	31-2210-0020
U 2	.78	8°	9°	31-1120-0020	31-1220-0020	31-2120-0020	31-2220-0020
U 3/Hk	.25	-7°	8°	31-113D-0020	31-123D-0020	31-213D-0020	31-223D-0020
U 4	.37	-7°	0°	31-1540-0020	31-1540-0020	31-2540-0020	31-2540-0020
U 4/Hk	.37	-7°	0°	31-114D-0020	31-124D-0020	31-214D-0020	31-224D-0020
U 5	.48	-7°	0°	31-1550-0020	31-1550-0020	31-2550-0020	31-2550-0020
U 5/Hk	.48	-7°	0°	31-115D-0020	31-125D-0020	31-215D-0020	31-225D-0020

MANDIBULAR				P/N			
Tooth	I/O mm	Torque (°)	Angulation (°)	.018"		.022"	
				R	L	R	L
L 1-2	.97	-6°	0°	31-1610-0020	31-1610-0020	31-2610-0020	31-2610-0020
L 3/Hk	.25	-6°	3°	31-143D-0020	31-133D-0020	31-243D-0020	31-233D-0020
L 4	.28	-12°	2°	31-1440-0020	31-1340-0020	31-2440-0020	31-2340-0020
L 4/Hk	.28	-12°	2°	31-144D-0020	31-134D-0020	31-244D-0020	31-234D-0020
L 5	.33	-17°	2°	31-1450-0020	31-1350-0020	31-2450-0020	31-2350-0020
L 5/Hk	.33	-17°	2°	31-145D-0020	31-135D-0020	31-245D-0020	31-235D-0020

# LEGEND

## LEGEND Mini Roth\* Type V-Slot

MAXILLARY					P/N			
Tooth	I/O mm	Torque (°)	Angulation (°)	Rotation (°)	.018"		.022"	
					R	L	R	L
U 1	.70	12°	5°	0°	31-1110-0034	31-1210-0034	31-2110-0034	31-2210-0034
U 2	.97	8°	9°	0°	31-1120-0034	31-1220-0034	31-2120-0034	31-2220-0034
U 3	.56	-2°	7°	0°	31-1130-0034	31-1230-0034	31-2130-0034	31-2230-0034
U 3/Hk	.56	-2°	7°	0°	31-113D-0034	31-123D-0034	31-213D-0034	31-223D-0034
U 4-5	.56	-7°	0°	0°	31-1540-0034	31-1540-0034	31-2540-0034	31-2540-0034
U 4-5/Off. Base	.56	-7°	0°	0°	31-1540-0035	31-1540-0035	31-2540-0035	31-2540-0035
U 4-5/Hk	.56	-7°	0°	0°	31-114M-0034	31-124M-0034	31-214M-0034	31-224M-0034

MANDIBULAR					P/N			
Tooth	I/O mm	Torque (°)	Angulation (°)	Rotation (°)	.018"		.022"	
					R	L	R	L
L 1-2	.97	0°	0°	0°	31-1610-0034	31-1610-0034	31-2610-0034	31-2610-0034
L 3	.56	-5°	7°	0°	31-1430-0034	31-1330-0034	31-2430-0034	31-2330-0034
L 3/Hk	.56	-5°	7°	0°	31-143D-0034	31-133D-0034	31-243D-0034	31-233D-0034
L 4	.56	-11°	0°	0°	31-1640-0034	31-1640-0034	31-2640-0034	31-2640-0034
L 4/Hk	.56	-11°	0°	0°	31-144D-0034	31-134D-0034	31-244D-0034	31-234D-0034
L 4/Off. Base	.56	-11°	0°	0°	31-1640-0035	31-1640-0035	31-2640-0035	31-2640-0035
L 4/Hk, Off. Base	.56	-11°	0°	0°	31-144D-0035	31-134D-0035	31-244D-0035	31-234D-0035
L 5	.56	-17°	0°	0°	31-1650-0034	31-1650-0034	31-2650-0034	31-2650-0034
L 5/Hk	.56	-17°	0°	0°	31-145D-0034	31-135D-0034	31-245D-0034	31-235D-0034
L 5/Off. Base	.56	-17°	0°	0°	31-1650-0035	31-1650-0035	31-2650-0035	31-2650-0035
L 5/Hk, Off. Base	.56	-17°	0°	0°	—	—	31-245D-0035	31-235D-0035



2<sup>nd</sup> Bicuspid



1<sup>st</sup> Bicuspid



Cuspid



Lateral



Central



## LEGEND Mini V-Slot BI

MAXILLARY					P/N			
Tooth	I/O mm	Torque (°)	Angulation (°)	Rotation (°)	.018"		.022"	
					R	L	R	L
U 1	.70	12°	5°	0°	31-1110-0034	31-1210-0034	—	—
U 2	.97	8°	9°	0°	31-1120-0034	31-1220-0034	—	—
U 3	.56	0°	7°	0°	—	—	31-2130-0040	31-2230-0040
U 3/Hk	.56	0°	7°	0°	—	—	31-213D-0040	31-223D-0040
U 4-5	.56	0°	0°	0°	—	—	31-2540-0040	31-2540-0040
U 4-5/Hk	.56	0°	0°	0°	—	—	31-215M-0040	31-225M-0040

MANDIBULAR					P/N			
Tooth	I/O mm	Torque (°)	Angulation (°)	Rotation (°)	.018"		.022"	
					R	L	R	L
L 1-2	.97	0°	0°	0°	31-1610-0034	31-1610-0034	—	—
L 3	.56	0°	5°	0°	—	—	31-2430-0040	31-2330-0040
L 3/Hk	.56	0°	5°	0°	—	—	31-243D-0040	31-233D-0040
L 4-5	.56	0°	0°	0°	—	—	31-2640-0040	31-2640-0040
L 4-5/Hk	.56	0°	0°	0°	—	—	31-244D-0040	31-234D-0040

# LEGEND

## LEGEND Mini Kits

Prescription	Upper arch	Lower arch	Hook on	P/N	
				.018"	.022"
Roth Type	5-5	5-5	3	31-1CC3-0010	31-2CC3-0010
Roth Type	5-5	5-5	3,4,5	31-1CC5-0010	31-2CC5-0010
MBT*	5-5	5-5	3	31-1CC3-0020	31-2CC3-0020
MBT*	5-5	5-5	3,4,5	31-1CC5-0020	31-2CC5-0020

\*Additional prescriptions available upon request





## LEGEND Medium Roth\* Type

MAXILLARY				P/N			
Tooth	I/O mm	Torque (°)	Angulation (°)	.018"		.022"	
				R	L	R	L
U 1	.25	12°	5°	32-1110-0010	32-1210-0010	32-2110-0010	32-2210-0010
U 2	.78	8°	9°	32-1120-0010	32-1220-0010	32-2120-0010	32-2220-0010
U 3	.25	2°	10°	—	—	32-2130-0010	32-2230-0010
U 3/Hk	.25	2°	10°	32-113D-0010	32-123D-0010	32-213D-0010	32-223D-0010
U 4	.37	-7°	0°	32-1540-0010	32-1540-0010	32-2540-0010	32-2540-0010
U 4-5/Off. Base	.37	-7°	0°	32-1540-0013	32-1540-0013	32-2540-0013	32-2540-0013
U 5	.48	-7°	0°	32-1550-0010	32-1550-0010	32-2550-0010	32-2550-0010
U 5/Hk	.48	-7°	0°	32-115M-0010	32-125M-0010	—	—

MANDIBULAR				P/N			
Tooth	I/O mm	Torque (°)	Angulation (°)	.018"		.022"	
				R	L	R	L
L 1-2	.97	-1°	0°	32-1610-0010	32-1610-0010	32-2610-0010	32-2610-0010
L 3	.25	-11°	7°	32-1430-0010	32-1330-0010	32-2430-0010	32-2330-0010
L 3/Hk	.25	-11°	7°	32-143D-0010	32-133D-0010	32-243D-0010	32-233D-0010
L 4	.28	-17°	0°	32-1640-0010	32-1640-0010	32-2640-0010	32-2640-0010
L 4/Hk	.28	-17°	0°	32-144D-0010	32-134D-0010	32-244D-0010	32-234D-0010
L 4/Off. Base	.28	-17°	0°	32-1640-0013	32-1640-0013	32-2640-0013	32-2640-0013
L 4/Hk, Off. Base	.28	-17°	0°	32-144D-0013	32-134D-0013	32-244D-0013	32-234D-0013
L 5	.33	-22°	0°	32-1650-0010	32-1650-0010	32-2650-0010	32-2650-0010
L 5/Hk	.33	-22°	0°	32-145D-0010	32-135D-0010	32-245D-0010	32-235D-0010
L 5/Off. Base	.33	-22°	0°	32-1650-0013	32-1650-0013	32-2650-0013	32-2650-0013
L 5/Hk, Off. Base	.33	-22°	0°	32-145D-0013	32-135D-0013	32-245D-0013	32-235D-0013

# LEGEND

## LEGEND Medium Extra Torque

MAXILLARY					P/N			
Tooth	I/O mm	Torque (°)	Angulation (°)	Rotation (°)	.018"		.022"	
					R	L	R	L
U 1	.25	18°	5°	0°	32-1110-0030	32-1210-0030	32-2110-0030	32-2210-0030
U 2	.78	10°	8°	0°	32-1120-0030	32-1220-0030	32-2120-0030	32-2220-0030
U 3	.25	0°	8°	2°m	—	—	32-2130-0030	32-2230-0030
U 3/Hk	.25	0°	8°	2°m	32-113D-0030	32-123D-0030	32-213D-0030	32-223D-0030
U 4-5	.42	-10°	4°	2°d	32-1140-0030	32-1240-0030	32-2140-0030	32-2240-0030
U 4-5/Hk	.42	-10°	4°	2°d	32-114M-0030	32-124M-0030	32-214M-0030	32-224M-0030

MANDIBULAR					P/N			
Tooth	I/O mm	Torque (°)	Angulation (°)	Rotation (°)	.018"		.022"	
					R	L	R	L
L 1-2	.97	1°	0°	0°	32-1610-0030	32-1610-0030	32-2610-0030	32-2610-0030
L 3/Hk	.25	-3°	7°	2°m	32-143D-0030	32-133D-0030	32-243D-0030	32-233D-0030
L 4-5	.30	-7°	0°	2°d	32-1440-0030	32-1340-0030	32-2440-0030	32-2340-0030
L 4-5/Hk	.30	-7°	0°	2°d	32-144D-0030	32-134D-0030	32-244D-0030	32-234D-0030



2<sup>nd</sup> Bicuspid



1<sup>st</sup> Bicuspid



Cuspid

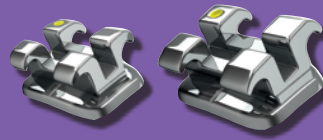


Lateral



Central





## LEGEND Medium MBT\*

MAXILLARY				P/N			
Tooth	I/O mm	Torque (°)	Angulation (°)	.018"		.022"	
				R	L	R	L
U 1	.25	17°	4°	32-1110-0020	32-1210-0020	32-2110-0020	32-2210-0020
U 2	.78	10°	8°	32-1120-0020	32-1220-0020	32-2120-0020	32-2220-0020
U 3/Hk	.25	-7°	8°	32-113D-0020	32-123D-0020	32-213D-0020	32-223D-0020
U 4	.37	-7°	0°	32-1540-0020	32-1540-0020	32-2540-0020	32-2540-0020
U 5	.48	-7°	0°	32-1550-0020	32-1550-0020	32-2550-0020	32-2550-0020
U 4/Hk	.37	-7°	0°	32-114M-0020	32-124M-0020	32-214M-0020	32-224M-0020
U 5/Hk	.48	-7°	0°	32-115M-0020	32-125M-0020	32-215M-0020	32-225M-0020

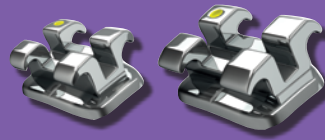
MANDIBULAR				P/N			
Tooth	I/O mm	Torque (°)	Angulation (°)	.018"		.022"	
				R	L	R	L
L 1-2	.97	-6°	0°	32-1610-0020	32-1610-0020	32-2610-0020	32-2610-0020
L 3/Hk	.30	-6°	3°	32-143D-0020	32-133D-0020	32-243D-0020	32-233D-0020
L 4	.50	-12°	2°	—	—	32-2440-0020	32-2340-0020
L 4/Hk	.50	-12°	2°	32-144D-0020	32-134D-0020	32-244D-0020	32-234D-0020
L 5	.50	-17°	2°	—	—	32-2450-0020	32-2350-0020
L 5/Hk	.50	-17°	2°	32-145D-0020	32-135D-0020	32-245D-0020	32-235D-0020

# LEGEND

## LEGEND Medium V-Slot / BI

MAXILLARY				P/N			
Tooth	I/O mm	Torque (°)	Angulation (°)	.018"		.022"	
				R	L	R	L
U 1	.41	12°	5°	32-1110-0034	32-1210-0034	32-2110-0034	32-2210-0034
U 2	.93	8°	9°	32-1120-0034	32-1220-0034	32-2120-0034	32-2220-0034
U 3	.36	0°	7°	32-1130-0040	32-1230-0040	—	—
U 3	.36	-2°	7°	32-1130-0034	32-1230-0034	32-2130-0034	32-2230-0034
U 3/Hk	.36	0°	7°	32-113D-0040	32-123D-0040	32-213D-0040	32-223D-0040
U 3/Hk	.36	-2°	7°	32-113D-0034	32-123D-0034	32-213D-0034	32-223D-0034
U 4/Hk	.43	0°	0°	—	—	32-214M-0040	32-224M-0040
U 4-5	.43	0°	0°	32-1540-0040	32-1540-0040	32-2540-0040	32-2540-0040
U 4-5	.43	-7°	0°	32-1540-0034	32-1540-0034	32-2540-0034	32-2540-0034
U 4-5/Off. Base	.43	-7°	0°	32-1540-0035	32-1540-0035	32-2540-0035	32-2540-0035
U 4-5/Hk	.43	-7°	0°	32-154M-0034	32-154M-0034	—	—

MANDIBULAR				P/N			
Tooth	I/O mm	Torque (°)	Angulation (°)	.018"		.022"	
				R	L	R	L
L 1-2	1.09	0°	0°	32-1610-0034	32-1610-0034	32-2610-0034	32-2610-0034
L 3	.36	-5°	7°	32-1430-0034	32-1330-0034	32-2430-0034	32-2330-0034
L 3/Hk	.36	-5°	7°	32-143D-0034	32-133D-0034	32-243D-0034	32-233D-0034
L 3/Hk	.36	0°	5°	—	—	32-243D-0040	32-233D-0040
L 4-5	.36	0°	0°	32-1640-0040	32-1640-0040	32-2640-0040	32-2640-0040
L 4	.36	-11°	0°	32-1640-0034	32-1640-0034	32-2640-0034	32-2640-0034
L 4/Off. Base	.36	-11°	0°	32-1640-0035	32-1640-0035	32-2640-0035	32-2640-0035
L 4/Hk	.36	-11°	0°	32-144D-0034	32-134D-0034	32-244D-0034	32-234D-0034
L 4/Hk	.36	0°	0°	—	—	32-244D-0040	32-234D-0040
L 4-5/Off. Base	.36	0°	0°	32-1640-0041	32-1640-0041	32-2640-0041	32-2640-0041
L 5	.36	-17°	0°	32-1650-0034	32-1650-0034	32-2650-0034	32-2650-0034
L 5/Hk	.36	-17°	0°	32-145D-0034	32-135D-0034	32-245D-0034	32-235D-0034
L 5/Off. Base	.36	-17°	0°	32-1650-0035	32-1650-0035	32-2650-0035	32-2650-0035



## LEGEND Medium Kits

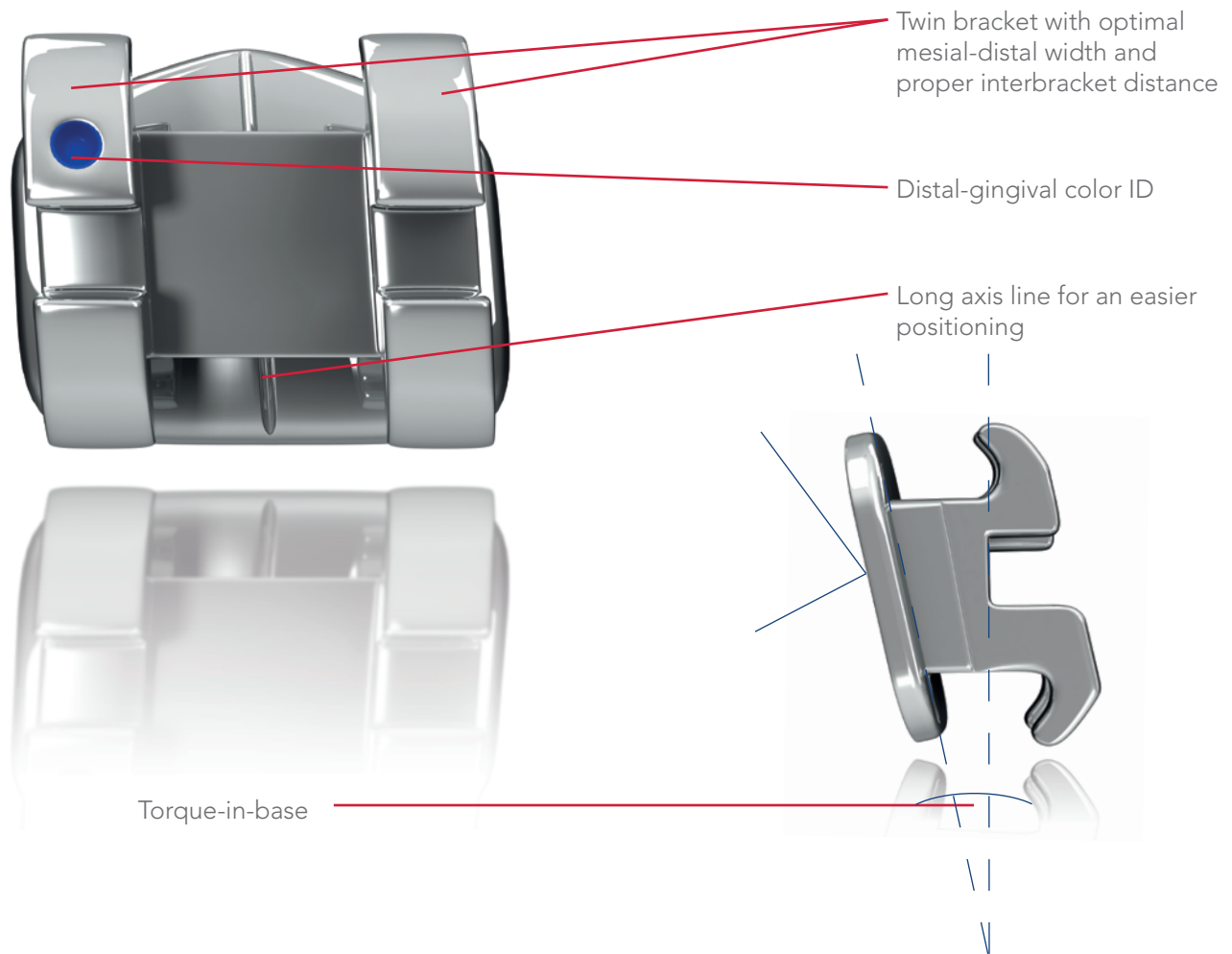
Prescription	Upper arch	Lower arch	Hook on	P/N	
				.018"	.022"
Roth Type	5-5	5-5	3	32-1CC3-0010	32-2CC3-0010
Roth Type	5-5	5-5	3,4,5	32-1CC5-0010	32-2CC5-0010
Extra-Torque	5-5	5-5	3	32-1CC3-0030	32-2CC3-0030
Extra-Torque	5-5	5-5	3,4,5	32-1CC5-0030	32-2CC5-0030
MBT*	5-5	5-5	3	32-1CC3-0020	32-2CC3-0020
MBT*	5-5	5-5	3,4,5	32-1CC5-0020	32-2CC5-0020

\*Additional prescriptions available upon request

# Legacy & Legacy mini

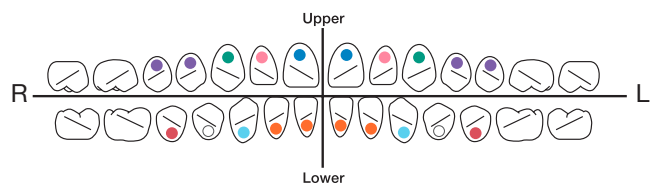
## Legacy & Legacy Mini

Legacy is a fully programmed bracket appliance system in accordance with the level slot alignment and dimensional requirements of the original straight wire philosophy. Legacy itself is a square bracket suited for straight wire traditionalists. Legacy mini is a rhomboid bracket that affords the shape contemporary placement techniques prefer.

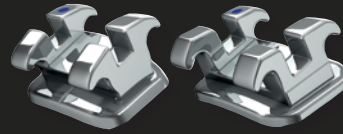


### Color codes

For some prescriptions, these color codes may be different on the bicuspid.



\*Roth/MBT prescriptions are not endorsed specifically by the named orthodontist.



## Legacy Roth\* Type

MAXILLARY				P/N	
Tooth	I/O mm	Torque (°)	Angulation (°)	.022"	
				R	L
U 1	.25	12°	5°	28-2110-0010	28-2210-0010
U 1/XT	.25	17°	5°	28-2110-0011	28-2210-0011
U 2	.78	8°	9°	28-2120-0010	28-2220-0010
U 2/XT	.78	10°	9°	28-2120-0011	28-2220-0011
U 2/Hk	.78	8°	9°	28-212D-0010	28-222D-0010
U 3	.25	-2°	13°	28-2130-0010	28-2230-0010
U 3/Hk	.25	-2°	13°	28-213D-0010	28-223D-0010
U 3	.25	3°	9°	28-2130-0011	28-2230-0011
U 3/Hk	.25	3°	9°	28-213D-0011	28-223D-0011
U 3	.25	-2°	9°	28-2130-0012	28-2230-0012
U 3/Hk	.25	-2°	9°	28-213D-0012	28-223D-0012
U 4	.37	-7°	2°d	28-2140-0010	28-2240-0010
U 4/Hk	.37	-7°	2°d	28-214D-0010	28-224D-0010
U 4/Hk m.	.37	-7°	0°	28-214M-0010	28-224M-0010

## MANDIBULAR

Tooth	I/O mm	Torque (°)	Angulation (°)	.022"	
				R	L
L 1-2	.97	-1°	2°	28-2410-0010	28-2310-0010
L 3	.25	-11°	7°	28-2430-0010	28-2330-0010
L 3/Hk	.25	-11°	7°	28-243D-0010	28-233D-0010
L 3/Hk/XT	.25	0°	5°	28-243D-0011	28-233D-0011
L 4	.28	-17°	0°	28-2440-0010	28-2340-0010
L 4/Hk	.28	-17°	0°	28-244D-0010	28-234D-0010
L 5	.33	-22°	0°	28-2450-0010	28-2350-0010
L 5/Hk	.33	-22°	0°	28-245D-0010	28-235D-0010

# Legacy & Legacy mini

## Legacy Mini Roth\* Type


MAXILLARY					P/N	
Tooth	I/O mm	Torque (°)	Angulation (°)	Rotation (°)	.022"	
					R	L
U 1	.25	12°	5°	0°	27-2110-0010	27-2210-0010
U 2	.78	8°	9°	0°	27-2120-0010	27-2220-0010
U 3	.25	-2°	13°	4°m	27-2130-0010	27-2230-0010
U 3/Hk	.25	-2°	13°	4°m	27-213D-0010	27-223D-0010
U 3/Hk Special	.25	-2°	9°	4°m	27-213D-0012	27-223D-0012
U 4	.37	-7°	0°	2°d	27-2140-0010	27-2240-0010
U 4/Hk	.37	-7°	0°	2°d	27-214M-0010	27-224M-0010


MANDIBULAR					P/N	
Tooth	I/O mm	Torque (°)	Angulation (°)	Rotation (°)	.022"	
					R	L
L 1-2	.97	-1°	2°	0°	27-2410-0010	27-2310-0010
L 1-2/Spécial Torque	.97	-5°	2°	0°	27-2410-0011	27-2310-0011
L 3	.25	-11°	7°	2°m	27-2430-0010	27-2330-0010
L 3/Hk	.25	-11°	7°	2°m	27-243D-0010	27-233D-0010
L 4/Off. Base	.28	-17°	0°	0°	27-2440-0013	27-2340-0013
L 4/Hk	.28	-17°	0°	4°d	27-244D-0010	27-234D-0010
L 4/Hk, Off. Base	.28	-17°	0°	0°	27-244D-0013	27-234D-0013
L 5/Off. Base	.33	-22°	0°	0°	27-2450-0013	27-2350-0013
L 5/Hk	.33	-22°	0°	4°d	27-245D-0010	27-235D-0010
L 5/Hk, Off. Base	.33	-22°	0°	0°	27-245D-0013	27-235D-0013





# Standard Edgewise


## Twin Edgewise


		Width	P/N	
		mm	.018"	.022"
	<b>Maxillary Centrals</b>			
	Double extra-wide	4.0	29-1510-0062	29-2510-0062
	Double wide	3.2	29-1510-0059	29-2510-0059


	<b>Laterals</b>			
	Double medium	2.6	29-1520-0053	29-2520-0053
	Double wide	3.2	—	29-2520-0059

	<b>Upper and lower cuspids</b>			
	Double wide	3.2	29-1730-0059	29-2730-0059
	Double medium	2.6	29-1730-0053	29-2730-0053
	Medium low profile	2.6	29-1630-0054	—
	Wide, hook, UL/LR	3.2	29-163D-0059	29-263D-0059

	<b>Upper bicuspid</b>			
	Offset wing, wide	3.2	29-1540-0061	—
	Offset wing, medium	2.6	29-1540-0057	29-2540-0057
	Offset wing, narrow	2.1	—	29-2540-0052
	Narrow	2.1	—	29-2740-0050
	Medium	2.6	29-1740-0053	29-2740-0053

	<b>Upper/Lower Molars</b>			
	Extra-wide	4.0	29-1760-0062	29-2760-0062
	Wide	3.2	29-1760-0059	29-2760-0059

	<b>Lower Anteriors</b>			
	Double, low profile, narrow	2.1	29-1610-0051	29-2610-0051
	Double, low profile, medium	2.6	29-1610-0055	29-2610-0055
	Double, standard narrow	2.1	29-1610-0050	29-2610-0050
	Double, standard medium	2.6	—	29-2610-0053

	<b>Lower Bicuspid</b>			
	Low profile medium	2.6	29-1640-0055	29-2640-0055
	Low profile medium, kidney-shaped	2.6	—	29-2640-0058
	Low profile narrow	2.1	—	29-2640-0051

\*Additional prescriptions available upon request

