



## Bonding and Banding Products



Experts in Orthodontics

05

***GC***

## Adhesive and Sealing Products

---

GC Ortho Connect™	180
GC Ortho Connect™ Flow	180
GC Ortho Etching Gel	180
GC Fuji ORTHO™	181
GC Fuji ORTHO LC	181
GC Fuji ORTHO LCPaste Pak Automix	181
GC Fuji ORTHO Band LC Paste Pak Automix	181
GC Fuji ORTHO	182
GC Fuji ORTHO Band Paste Pak	182
GC KommonBase™	183
Tooth Mousse & MI Paste Plus	183
MI Varnish™	185
GC Tri Plaque ID Gel™	185



## Adhesive and Sealing Products

Our innovative adhesive products provide you with an added plus in your daily practice. Developed by GC Orthodontics in Japan, our adhesives are submitted to extensive testing in order to guarantee superior strength when bonding metal, ceramic or plastic appliances.



## Light Cure Adhesive

### One Step Solution

With GC Ortho Connect, there's no need to apply primer or adhesive on the tooth, since it is already incorporated into the paste. A simple etching of the enamel followed by drying is enough to prepare the bracket or buccal tube for bonding.



## GC Ortho Connect™

For Bracket bonding

Contents	P/N
2 syringes of 2.9 g, 4 dispensing tips, 2 light protective covers	90-1100-0000

## GC Ortho Connect™ Flow

For Lingual retainer bonding

Contents	P/N
2 syringes of 2.7 g, 30 dispensing tips, 2 light protective covers	90-3100-0000



## GC Ortho Etching Gel

With an ideal fluidity, this etching in gel (phosphoric acid) will have a perfect consistency during the necessary time to prepare the tooth enamel.

Contents	P/N
2 syringes of 4,8 g, 40 dispensing tips	90-1400-0000



## GC Fuji ORTHO™

### Easy On

GC Fuji ORTHO LC is a light-cured, resin reinforced glass ionomer that offers superior results thanks to its simple placement procedure, fluoride protection and trouble-free removal of brackets and bands on completion of treatment.

### Superior Placement

The "easy on" placement of Fuji ORTHO products is guaranteed, due to its ability to be placed in the presence of moisture with no need for ortho-phosphoric acid etching, which simplifies the bonding procedure.



## GC Fuji ORTHO LC

Contents	P/N
Intro Pack: 15 g powder, 6.8 ml liquid	90-1600-0000
Refill: 40 g powder	901603-0000
Refill: 6.8 ml liquid	90-1605-0000
Refill: Capsules x50	90-1606-0000

## GC Fuji ORTHO LC Paste Pak Automix



Contents	P/N
Starter Set: 1 x 13.3 g, 7.2 ml Paste Pak cartridge, 20 x LC mixing tip, 2 x ORTHO Gel Conditioner, 15 brush tips, White Color Paste	90-1701-0000
2 x 13.3 g, 7.2 ml Paste Pak cartridge	90-1702-0000

## GC Fuji ORTHO Band LC Paste Pak Autom



Contents	P/N
Refill: 2 x 12.9 g, 7.2 ml, Paste Pak cartridge, with mixing pad, Blue Color Paste	90-1900-0000

## Self-Cure Orthodontic Adhesives



### GC Fuji ORTHO

For brackets and bands

Contents	P/N
Intro Pack: 40 g powder, 2 x 6.8 ml liquid	90-1500-0000
Refill: 40 g powder	90-1503-0000
Refill: 6.8 ml liquid	90-1504-0000



### GC Fuji ORTHO Band Paste Pak

Contents	P/N
Refill: 2 x 13.3 g; 7.2 ml paste cartridges and 1 mixing pad, color blue	90-1802-0000

### GC Fuji Ortho Related Products



Description	P/N
1 - Paste Pak Dispenser	90-1708-0000
2 - Capsule Applicator	90-1609-0000
3 - GC ORTHO Conditioner	90-2200-0000
4 - GC ORTHO Gel Conditioner	90-2100-0000
5 - GC Mixing Tips LC	90-1707-0000



## Lingual Orthodontics Base Extensions

### GC KommonBase™



Improvements in customized base design and bonding materials have led to the development of a precise direct-bonding system called GC KommonBase.

The system features a large bonding base that provides precise bracket fit and positioning, while maximizing bond strength. No transfer trays are needed because of the base's self-positioning shape. In addition, by using a reference jig, single brackets can be rebonded in case of failure or the need for repositioning.

2 syringes of 2,7 g, 4 dispensing tips and 1 light protective cover	P/N
KommonBase HV Clear (high viscosity)	90-1200-0000
KommonBase LV Pink (low viscosity)	90-1300-0000

## Miscellaneous

### Tooth Mousse & MI Paste Plus



Tooth Mousse is the ideal way to give your patients maximum all-round protection. Thanks to Recaldent™\* – its revolutionary ingredient!



Recaldent™ is derived from casein, the milk protein. Recent research has shown that milk's protective effect lies in a part of the casein protein called casein phosphopeptide (CPP), which carries calcium and phosphate ions as Amorphous Calcium Phosphate (ACP). Calcium phosphate is usually insoluble; in other words, it forms a crystalline structure at neutral pH. However, the CPP keeps the calcium and phosphate in an amorphous, non-crystalline state, much like the saliva's mineral components. This means that the CPP-ACP complex, or Recaldent™, is the optimal way to deliver calcium and phosphate ions to the surface of the tooth and within dental plaque. In short, Recaldent™ depresses enamel demineralisation and, even better, remineralises enamel.

\* Recaldent™ is a trademark of Cadbury Enterprises Pte Ltd.

## The Benefits of GC Tooth Mousse at a Glance:

- Supports greater resistance to acid attacks by inhibiting enamel demineralisation and inducing remineralisation at the tooth surface and sub-surface
- Helps minimize tooth sensitivity by obturating open dentinal tubules
- Prevents initial cavities from forming thanks to its anti-cariogenic properties
- Reverses white spot lesions process, even after orthodontic treatment

GC Tooth Mousse (40g, 35 ml per tube)	P/N
Assorted pack 10 pcs, 2 of each flavor (Melon, Strawberry, Tutti-Frutti, Mint & Vanilla)	55-0180-0000
Strawberry, pack of 10 pcs	55-0180-0034
Melon, pack of 10 pcs	55-0180-0037
Mint, pack of 10 pcs	55-0180-0012
Tutti-Frutti, pack of 10 pcs	55-0180-0038
Vanilla, pack of 10 pcs	55-0180-0036

## Combining Remineralisation and Fluoridation, the Benefits of GC MI Paste Plus™ at a Glance:

- Buffers the pH changes in plaque
- Impairs the adhesion and growth of Streptococcus mutans and Streptococcus sobrinus to the tooth surface
- Remineralises enamel lesions (remineralisation) and makes remineralised enamel more resistant to acid attacks
- Optimises the way fluoride is transported to enamel and the fluoride intake by enamel

GC MI Paste Plus (40g, 35 ml per tube)	P/N
Assorted pack 10 pcs, 2 of each flavour (Melon, Strawberry, Tutti-Frutti, Mint & Vanilla)	55-0181-0000
Mint, pack of 10 pcs	55-0181-0012
Strawberry, pack of 10 pcs	55-0181-0034
Melon, pack of 10 pcs	55-0181-0037
Vanilla, pack of 10 pcs	55-0181-0036
Tutti-Frutti, pack of 10 pcs	55-0181-0038





## MI Varnish™

### Support, Replenish and Protect with the Stroke of a Brush

GC introduces MI Varnish, the latest addition to your minimum intervention dentistry arsenal.

Offering superior coverage of tooth surfaces, MI Varnish does substantially more than your average fluoride varnish. By delivering a powerful dose of fluoride, MI Varnish provides an added booster effect of calcium and phosphate ions through its patented Recaldent™\* ingredient.

Contents	P/N
MI Varnish Intro Pack, 10 unit doses MI Varnish (5 Strawberry + 5 Mint), 0.50 ml per unit dose, and 20 brushes	55-0183-0000
Mint	55-0183-0012
Strawberry	55-0183-0034

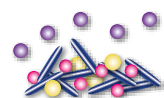
## GC Tri Plaque ID Gel™



GC Tri Plaque ID Gel can not only differentiate between old and new plaque in a few easy steps, this unique gel can also highlight exactly where the bacteria are most active by disclosing the acidic pH. This additional information will be a great help in your daily practise to motivate your patients to improve their oral hygiene.

Tri Plaque ID Gel =  Blue pigment  Red pigment  Sucrose

 Acid  Bacteria



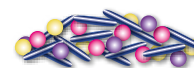
#### NEW PLAQUE

When a plaque biofilm is sparse, the blue pigment is easily washed off which leaves behind the red pigment showing a pink / red result.



#### OLD PLAQUE (> 48HR)

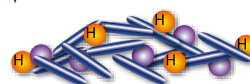
When a plaque biofilm has matured, its structure is dense, so both the blue and red pigments are trapped which forms a blue / purple layer.



#### EXTRA HIGH RISK PLAQUE

The sucrose in GC Tri Plaque ID Gel will be metabolized by the acidogenic bacteria within the high risk plaque biofilm.

The resulting acid produced lowers the plaque pH (<pH4,5) and this makes the red pigment disappear which leaves the light blue colour.



#### EXTRA HIGH RISK PLAQUE

Dr. G. Ghani, United Kingdom

Contents	P/N
40 g (36 ml) tube of ID gel	55-0182-0000

